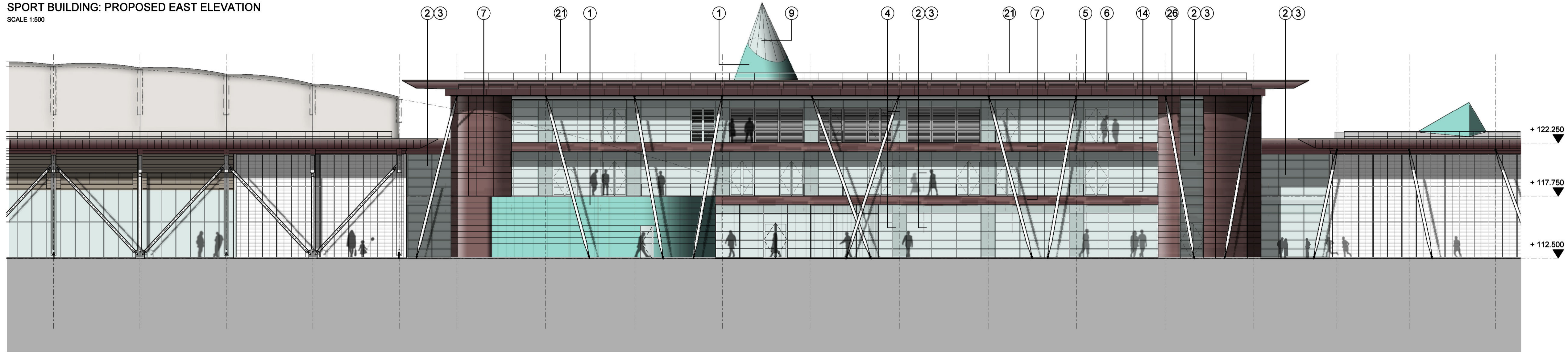
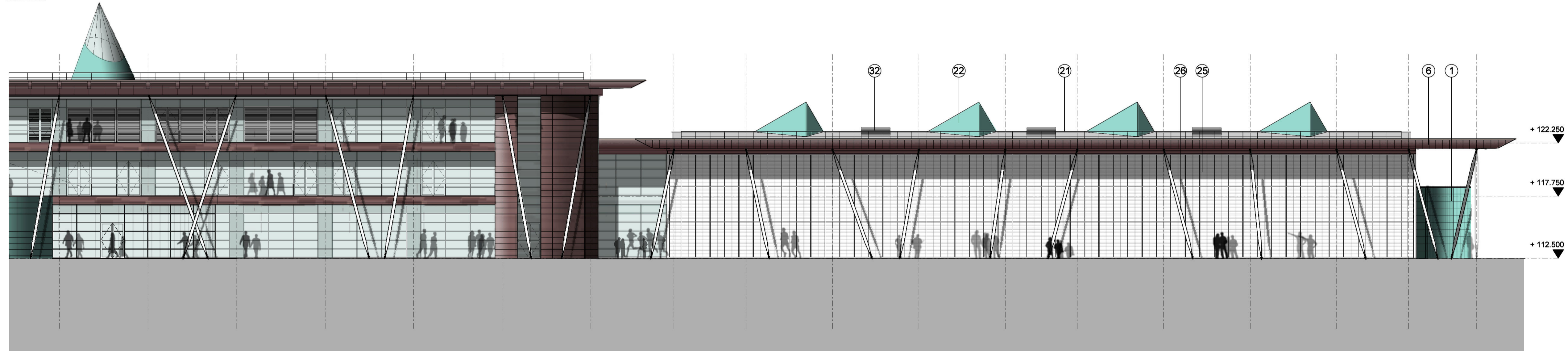


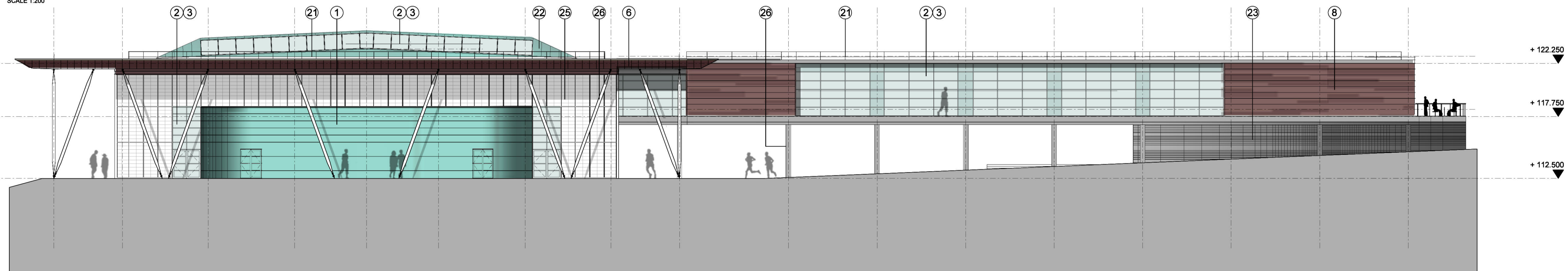
09003-450/01  
SPORT BUILDING: PROPOSED EAST ELEVATION  
SCALE 1:500



09003-450/02  
SPORT HUB BUILDING: PROPOSED EAST ELEVATION  
SCALE 1:200



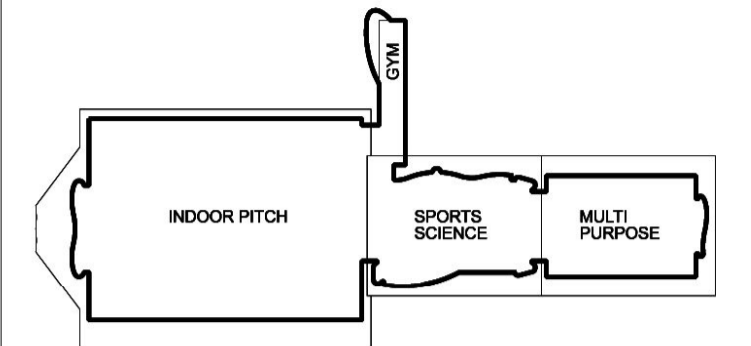
09003-450/03  
MULTI PURPOSE HALL: PROPOSED EAST ELEVATION  
SCALE 1:200



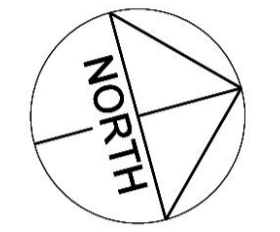
09003-450/04  
MULTI PURPOSE HALL: PROPOSED NORTH ELEVATION  
SCALE 1:200

Notes  
1. To be read with CDM Risk Register  
2. Do not scale, check this is the latest version, if in doubt, ask see drawing issue log for issue history

09003-450/05  
Sports Elevation Location Plan  
Scale: 1:5



450  
01



MATERIALS LEGEND

- ① Pre patinated copper cladding
- ② PPC curtain walling
- ③ Sealed double glazed units
- ④ Sealed double glazed insulated spandrel panels
- ⑤ Bronze anodised aluminium louvre blades
- ⑥ Pre weathered brass cassette panels to soffit and fascias
- ⑦ Pre weathered brass strip cladding
- ⑧ Pre weathered brass plank cladding
- ⑨ Structural glazing (double glazed)
- ⑩ Stone cladding
- ⑪ Oak strip boarding cladding
- ⑫ Oak solar shading fins
- ⑬ ppc channel
- ⑭ Laminated glass balustrade
- ⑮ Glulam column with engineered steel head and base connection details
- ⑯ Stainless steel bracing to porte cochere
- ⑰ Bronze screen to plant louvres
- ⑱ Roller shutter doors
- ⑲ ppc steel doorset
- ⑳ Standing seam metal deck roofing
- ㉑ Handrail: ppc 12 x50 flats
- ㉒ Prepatinated copper rooflight surround
- ㉓ ppc louvres
- ㉔ ppc rainscreen cassette cladding
- ㉕ Kalwall cladding panels in ppc support framework
- ㉖ Painted steel columns with engineered head and base details
- ㉗ Opaque double glazed units
- ㉘ Timber louvres
- ㉙ Tensile opaque fabric roof covering
- ㉚ Gableon walling
- ㉛ Dressed stone walling

ISSUED FOR PLANNING  
2010.02.12 MB BF  
Rev Notes Date By Review

redboxarchitecture

Red Box Architecture, St Nicholas Church, Newcastle upon Tyne, NE1 1RJ  
t: +44 (0)191 245 7105, f: +44 (0)191 245 7111, mail@redboxdesign.com, www.redboxdesign.com  
Red Box Design Group Ltd trading as Red Box Architecture  
redboxdesigngroup : redboxinteriors : redboxgallery

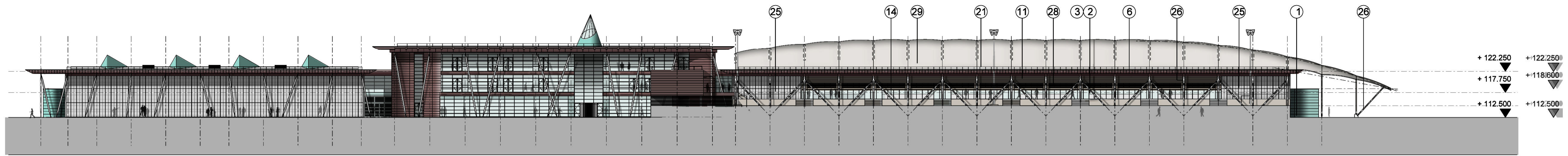
THE NATIONAL FOOTBALL CENTRE  
ST GEORGE'S PARK

SPORTS BUILDING  
Proposed Elevations

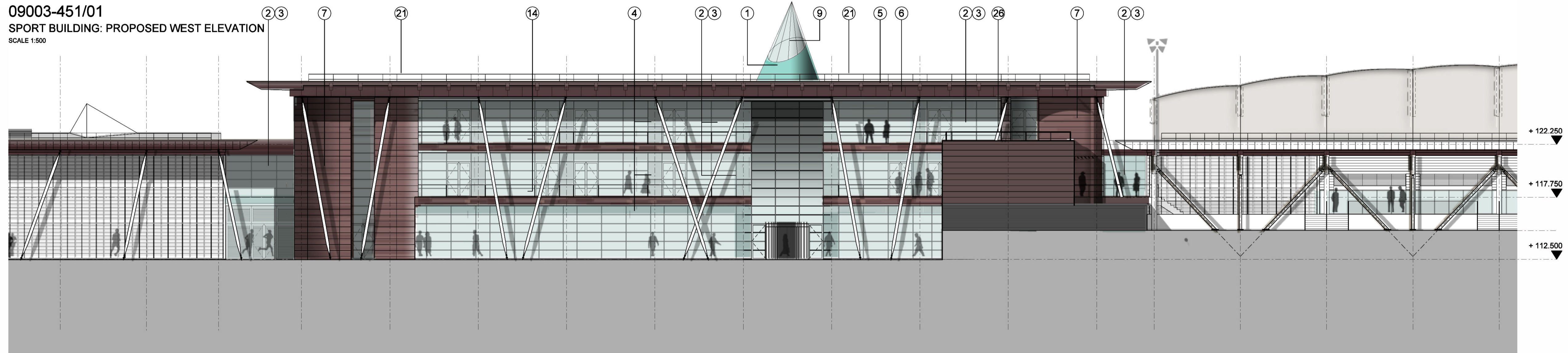
1:500/200	09 003	450_COL	-
A1	PLANNING		

copyright © Red Box Design Group Ltd 2010

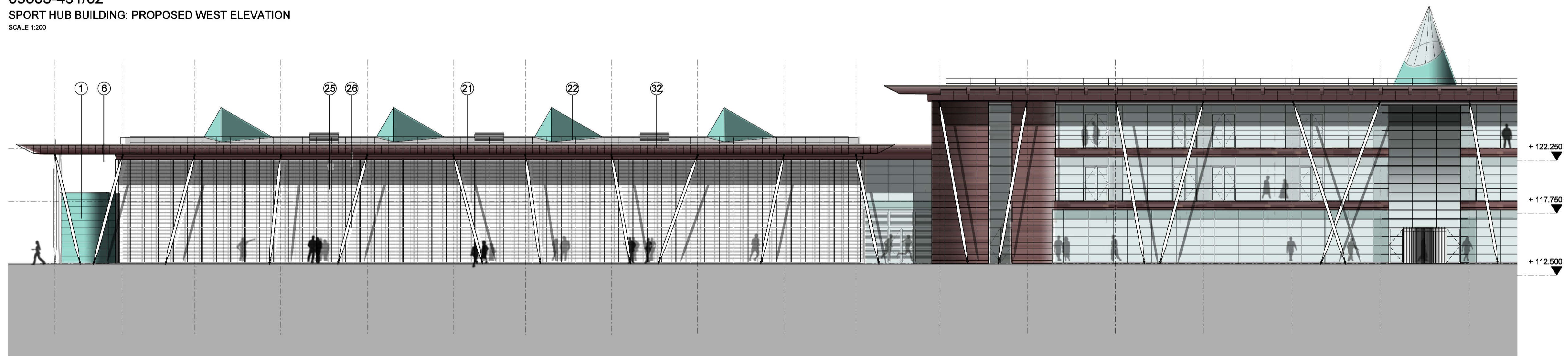




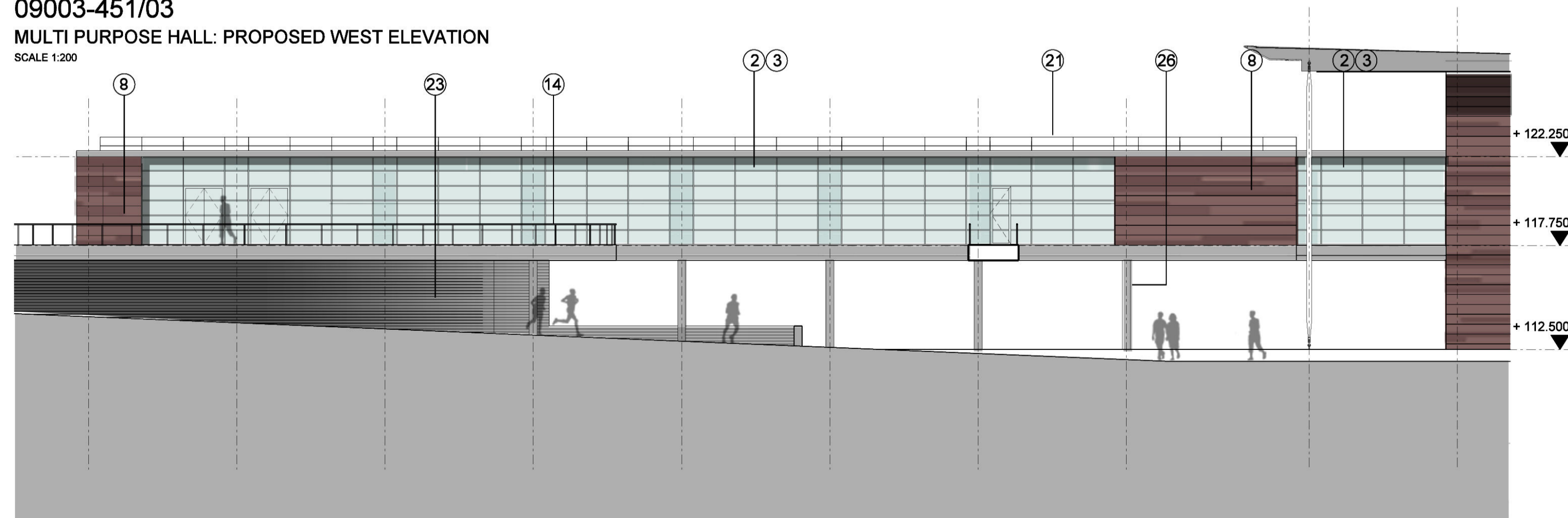
09003-451/01  
SPORT BUILDING: PROPOSED WEST ELEVATION  
SCALE 1:500



09003-451/02  
SPORT HUB BUILDING: PROPOSED WEST ELEVATION  
SCALE 1:200



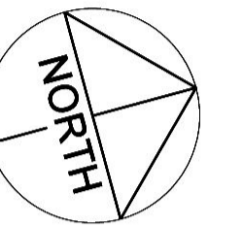
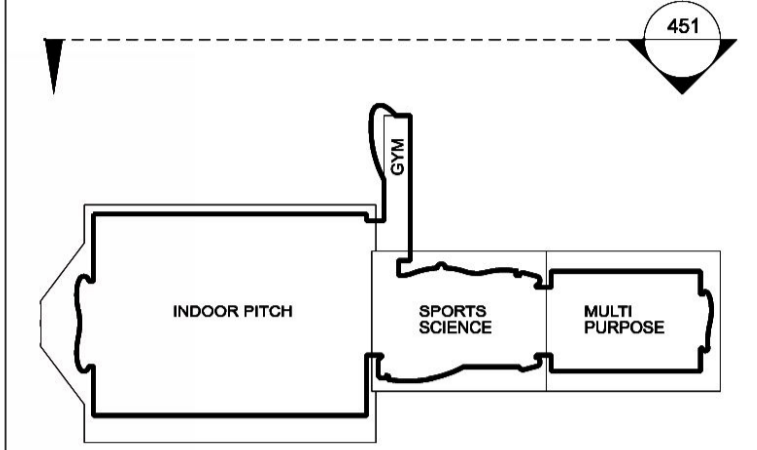
09003-451/03  
MULTI PURPOSE HALL: PROPOSED WEST ELEVATION  
SCALE 1:200



09003-451/04  
MULTI PURPOSE HALL: PROPOSED SOUTH ELEVATION  
SCALE 1:200

Notes  
1. To be read with CDM Risk Register  
2. Do not scale, check this is the latest version, if in doubt, ask see drawing issue log for issue history

09003-451/05  
Sports Elevation Location Plan  
Scale: NT 5



MATERIALS LEGEND

- ① Pre patinated copper cladding
- ② PPC curtain walling
- ③ Sealed double glazed units
- ④ Sealed double glazed insulated spandrel panels
- ⑤ Bronze anodised aluminium louvre blades
- ⑥ Pre weathered brass cassette panels to soffit and fascias
- ⑦ Pre weathered brass strip cladding
- ⑧ Pre weathered brass plank cladding
- ⑨ Structural glazing (double glazed)
- ⑩ Stone cladding
- ⑪ Oak strip boarding cladding
- ⑫ Oak solar shading fins
- ⑬ ppc channel
- ⑭ Laminated glass balustrade
- ⑮ Glulam column with engineered steel head and base connection details
- ⑯ Stainless steel bracing to portie cochere
- ⑰ Bronze screen to plant louvres
- ⑱ Roller shutter doors
- ⑲ ppc steel doorset
- ⑳ Standing seam metal deck roofing
- ㉑ Handrail: ppc 12 x50 flats
- ㉒ Prepatinated copper rooflight surround
- ㉓ ppc louvres
- ㉔ ppc rainscreen cassette cladding
- ㉕ Kalwall cladding panels in ppc support framework
- ㉖ Painted steel columns with engineered head and base details
- ㉗ Opaque double glazed units
- ㉘ Timber louvres
- ㉙ Tensile opaque fabric roof covering
- ㉚ Gabion walling
- ㉛ Dressed stone walling

Rev	Notes	Date	By	Review
	ISSUED FOR PLANNING	2010.02.12	MB	BF

redboxarchitecture

Red Box Architecture, St Nicholas Chambers, Newcastle upon Tyne, NE1 1RJ  
t: +44 (0)191 245 7105, f: +44 (0)191 245 7111, mail@redboxdesign.com, www.redboxdesign.com  
Red Box Design Group Ltd trading as Red Box Architecture

redboxdesigngroup : redboxinteriors : redboxgallery

THE NATIONAL FOOTBALL CENTRE  
ST GEORGE'S PARK

SPORTS BUILDING  
Proposed Elevations

1:500/200	09 003	451_COL	-
A1	PLANNING		

copyright © Red Box Design Group Ltd 2010